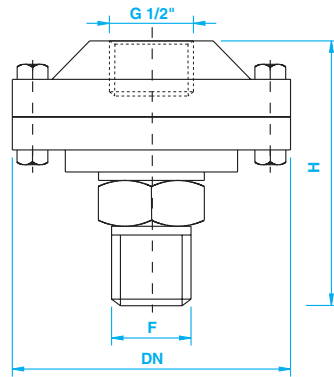


SP1

SEPARATORE A MEMBRANA CON ATTACCO FILETTATO

DIAPHRAGM SEAL WITH THREADED CONNECTION



Campo scala / Range [bar]	DN [mm]	H [mm]
0 / 1 - 0 / 1,6	95	77
0 / 2,5 - 0 / 4 - 0 / 6 - 0 / 10 - 0 / 16 0 / 25 - 0 / 40 - 0 / 60 - 0 / 100	74	70
0 / 160 - 0 / 400 - 0/600	74	80
0 / 1000	90	83

ATTACCO STRUMENTO: G1/2" A UNI ISO 228/1 Femmina

ATTACCO PROCESSO: G1/2" A UNI ISO 228/1

MATERIALI: Membrana e corpo inferiore in AISI 316
Altro: acciaio inossidabile AISI 304

OPZIONI

ESECUZIONE A DISTANZA
capillare in AISI 316 con o senza armatura (max. 6 - 8 metri)

ESECUZIONE ISPEZIONABILE per una rapida pulizia della membrana

ATTACCO STRUMENTO: G 1/4" - 1/4" NPT - G 3/8" Femmina

ATTACCO PROCESSO: G 1/2" Maschio girevole - 1/2" NPT

RIVESTIMENTO in teflon delle parti a contatto con il fluido

MEMBRANA e corpo inferiore in HASTELLOY C

INSTRUMENT CONNECTION: G1/2" A UNI ISO 228/1 Female.

PROCESS CONNECTION: G1/2" A UNI ISO 228/1

MATERIAL: Diaphragm and inferior body in ss. AISI 316
Other: stainless steel AISI 304

OPTION

REMOTE EXECUTION
capillary in AISI 316 with or without armour (max. 6 - 8 meters)

EXAMINABLE EXECUTION for a quick cleanig of the diaphragm.

INSTRUMENT CONNECTION: G 1/4" - 1/4" NPT - G 3/8" Female

PROCESS CONNECTION: G 1/2" rotating male - 1/2" NPT

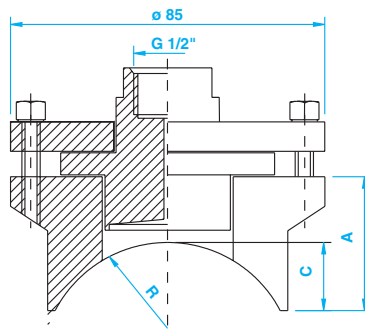
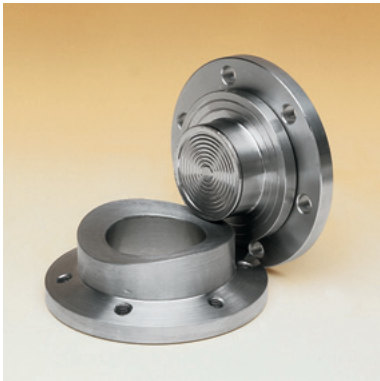
TEFLON COATING of wetted parts.

DIAPHRAGM and inferior body in HASTELLOY C

SP2

SEPARATORE A MEMBRANA PER TUBAZIONI

DIAPHRAGM SEAL FOR PIPES



Dimensioni / Dimension [mm]				
DN		A	C	R
50	2"	35	16	30
65	2 1/2"	33	14	36,5
80	3"	30	11	44,5
100	4"	27	8	57
125	5"	26	6	71
150	6"	26	5,5	84,5
200	8"	25	5	110

CAMPI SCALA

[bar] 0 / 4 0 / 6 0 / 10 0 / 16 0 / 25 0 / 40 0 / 60 0 / 100 0 / 160 0 / 250

ATTACCO STRUMENTO: G1/2" A UNI ISO 228/1 Femmina

ATTACCO PROCESSO: flangia a saldare su tubo.

MATERIALI Membrana e corpo inferiore in AISI 316
Altro: acciaio inossidabile AISI 304

OPZIONI

ESECUZIONE A DISTANZA
con capillare in AISI 316 nudo o rivestito (max. 6 - 8 metri)

ATTACCO STRUMENTO: G 1/4" - 1/4" NPT - G 3/8" Femmina

MEMBRANA e corpo inferiore in HASTELLOY C

RANGES

INSTRUMENT CONNECTION: G1/2" A UNI ISO 228/1 Female

PROCESS CONNECTION: Saddle flange to weld on process line

MATERIAL: Diaphragm and inferior body in ss. AISI 316
Other: stainless steel AISI 304

OPTION

REMOTE EXECUTION
Capillary in AISI 316 with or without armour (max. 6 - 8 meters)

INSTRUMENT CONNECTION: G 1/4" - 1/4" NPT - G 3/8" Female.

DIAPHRAGM and inferior body in HASTELLOY C